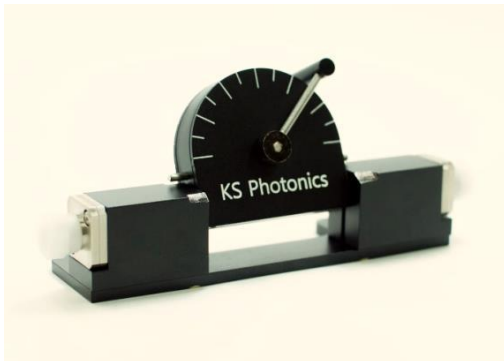
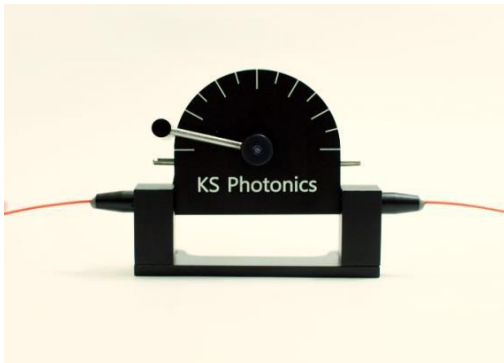


Single Paddle Polarization Controller

All-new fiber-optic single paddle polarization controller



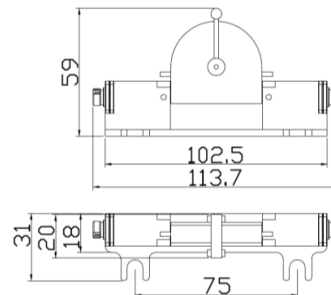
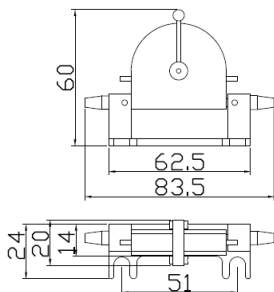
Features & Applications

FEATURES:

- Compact new single paddle design
- No squeezing fiber
- Short fiber length
- Negligible loss and back reflection
- Wavelength insensitive
- High extinction (> 30 dB)
- Easy to use (intuitive control)
- Available with or without connectors

APPLICATIONS:

- Optical communication
- Fiber optic sensors
- Component testing
- Fiber laser
- PDL measurement



For more information please contact Phoenix sales:
sales@phoenixphotonics.com or visit us at
www.phoenixphotonics.com

SPECIFICATION

Polarization Extinction Ratio (dB)	> 30
Insertion loss (dB)	< 0.3
Polarization dependent loss (dB)	< 0.03 (Typical)
Operation range (nm)	1260 - 1625

ORDERING INFORMATION:

